




**Holistic Childcare
and Education**

Living and Learning in Harmony



Living and Learning in Harmony



Closeburn House School & Residence

01 Priorities

02 Closeburn House values

03 our team leaders

04 Curriculum



Our priorities

Closeburn House was created to ensure every child is given the opportunity to thrive in their learning regardless of their trauma or circumstances

We meet our priorities by:

Instilling a desire to learn

by setting relevant targets,
providing appropriate support and
rewarding achievement

Developing inquiring minds

fostered by increasingly
independent learning



Fostering


Self-reliance and
motivation.

Providing

a safe, stimulating
and nurturing
learning
environment.

Promoting

cooperation in all
aspects of school
life.



We offer a school of opportunity and an expectation that every member of our school community is treated equally and is safe and secure.

Our Vision is to create a happy, safe, nurturing environment, which supports children to become settled to learn and to develop to their full potential

Our **Values** of honesty, kindness, respect and safety underpin how our community develops and thrives. They are key to growing nurturing and successful relationships

We see behaviour as a language and respond in an objective and reflective manner. Children benefit from an individualized, inclusive and nurturing setting where they have the opportunity to explore deep-rooted issues and trauma through therapy, play and social modelling

**Learn together
Play together
Achieve together**

Our Values



Honesty

We foster honesty in all our dealings with every member of our community.



Kindness

We talk about our feelings, manage our emotions and offer support and guidance when we are feeling wobbly.



Respect

We are respected and develop a strong sense of belonging at Maben House School. It helps us to learn and manage our own mental health.



Safety

We act in a safe way; we look after each other and we are free from harm here at Maben House. Maben House is a safe environment in which to explore some of the difficulties we face in our lives.

Our Team Leaders



Grace Little
Head of Care

I have worked across numerous roles here for over 14 years. I love my role and work within a team of dedicated staff at Maben House and Closeburn House where we all strive to deliver outstanding support and care for all our young people.



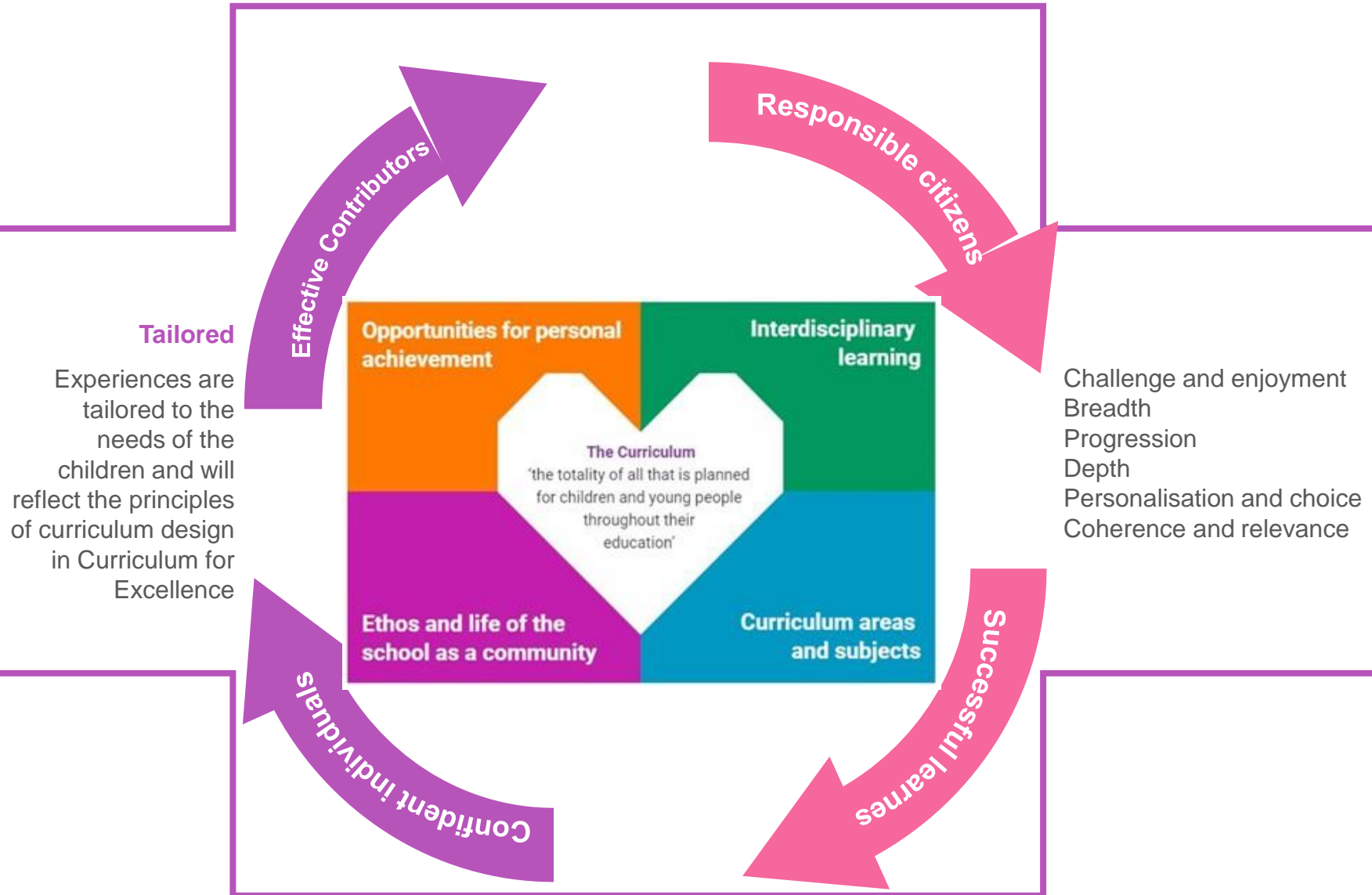
Nicola McDonald
Head of Education

It is my privilege to work with the young people and the teams around them. I am passionate about supporting our young learners to achieve their fullest potential and to build the foundations of better outcomes for each of them.



We want every child to feel safe and happy to attend school
Primary School is the time when a child should learn, play and build the skills
relevant to a successful career educationally and socially.

Curriculum for Excellence



Qualifications and Certifications

At Closeburn House we offer a diverse curriculum of subjects and qualifications.

These include:

- Applications of Mathematics
- English
- Science
- Hospitality
- History
- Geography
- Physical Education
- Computing Science
- Administration and IT
- Art and Design

Our subject qualifications can be completed up to National 5 level. This translates to a grade 4-9 with GCSE.



To enable our students in reaching their full potential we encourage our young people to participate in work experience and volunteering opportunities. To facilitate this we have put several pupils through their Level 2 Food Hygiene and Safety for Catering certification. This has allowed them to engage in the workforce and prepare them for life outside of school.



Electives Program

Last year we started an electives program where our pupils self-select an area of interest offered by their teachers. This program has been incredibly successful and has had huge impacts on our pupil attainment and self-esteem.

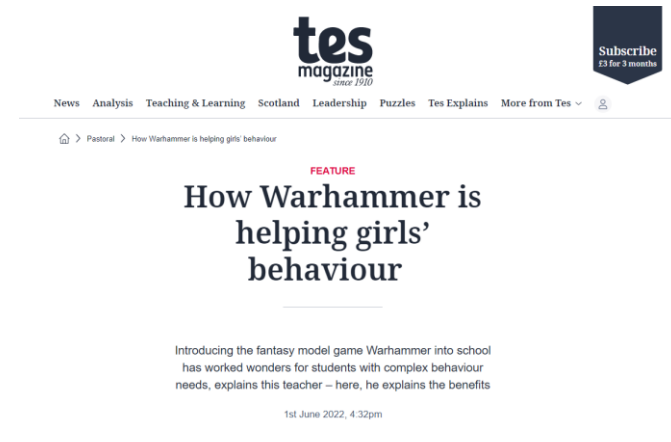
Our electives change every term with some sticking around all year round depending on popularity.

Adjacent are some of the electives we run and the impacts they have had on our school and young people.

Some other electives we run are: Photography, hill walking, Arts and crafts and Baking.



The Warhammer elective has been hugely successful with our young people, many of whom have traveled on school trips to Carlisle to visit the local store and participate in activities and game events. Our pupils, build, paint and play with the Warhammer miniatures which have resulted in real positive outcomes in their learning. We have been featured in several Scottish, UK, and world wide publications for the work we have been doing using Warhammer.



Earlier this year our pupils acted and performed in a large-scale production for their drama elective. This variety performance style production was a huge success with many of our young people showcasing their talents for a large audience. One pupil who directed and produced the show was nominated for a Youth Work award and became a top 3 finalist out of hundreds of nominees. She was celebrated at a large national lottery-funded awards evening with other finalists along with her invited guests. A very special evening!





Our setting



Closeburn House is set in a unique, picturesque part of Southwest Scotland.

Surrounded by lush, green farmlands and rolling hills. This quiet rural location provides excellent recreational facilities for both day scholars and residents. Our location allows for diverse outdoor learning experiences in addition to easy access to facilities in and around Dumfries.



Closeburn House
Education & Care
educates children
with social,
emotional and
behavioural
needs

Our children benefit from the support of:

- Therapeutic environment and interventions
- Small classroom settings
- Nurturing and home like environment which is stable and consistent
- The space to explore their own feelings, emotions and behaviours.

Trauma informed

The majority of children will have faced the feelings associated with exclusion, feeling different from others, isolation and resentment. We understand the psychological effects of exclusion and our model has been developed with a trauma informed approach, whilst keeping nurture and boundaries at the core of our daily lives.

CPI Verbal Intervention & CPI Safety Intervention



01

Preventing crises from occurring

Establishing relationships and understanding in effective communications.

02

De-escalating potential crises

Listening carefully to the problem the child is facing to work alongside them to lessen anxiety and distress.

03

Effectively managing acute crises

Working with the child to help them to return to their prior level of being, to be able to help them minimize the negative impacts of a crisis period

04

Restorative

Using non-judgment and sensitivity to work with the child to reflect on their distress, what caused and how they could work with the team around them to work through similar situations again.

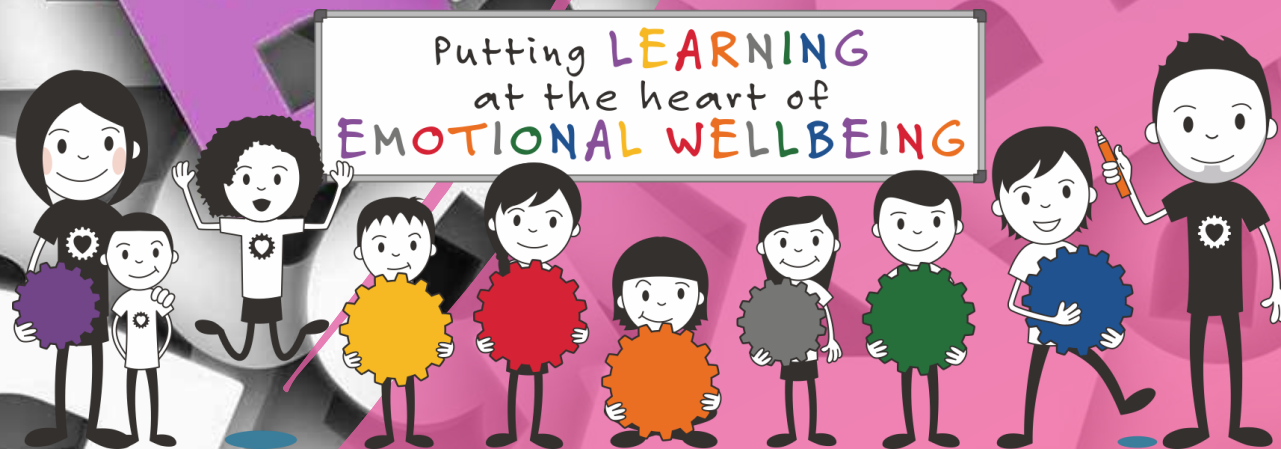
Emotional wellbeing

We understand the importance of emotional and social literacy in developing a child's character and our team works with



a programme which supports the development of emotional literacy.

The Emotion Works educational programme is 'home grown' in Scotland so is very well aligned to the Scottish Curriculum and related policies such as 'Getting it Right for Every Child' (GIRFEC). There is also a good overlap with current educational concerns such as the Covid Recovery agenda.



Benefits of Volunteering and work experience

As part of the SQA's employability award and our commitment to preparing our students to life after school, we encourage pupils to participate in work experience opportunities and volunteering.

The Employability Award is flexible and allows maximum choice in the way it is delivered and assessed.

Delivery methods and activities are tailored to suit the needs of our pupils. The Award is based on smaller amounts of learning, making it easier to capture achievement.

This qualification is nationally recognised and we have seen outcomes and attainment soar for the pupils who have participated.

Preparation for the workforce and independent living

- We foster a strong sense of work identity.
- We develop skills valued by employers.
- We help to gather evidence of skills.

Our pupils have had work experience opportunities in catering, front of house, charity work and animal care.





Registered with:

Care Inspectorate;
Education Scotland;
General Teaching
Council for Scotland;
Scottish Social Service
Council



Working with:

Children's Rights;
#KeepThePromise;
SQA;
CPI Verbal
Intervention & CPI
Safety Intervention



Contact us:

01848 331352
www.holisticchildcare.co.uk



Find us:

Hightrees Ltd,
5HP, Closeburn
Dumfries and Galloway

Closeburn House School and Residence